



## Lewin Road, SW16 6JU

£500,000

- Two double bedrooms
- Open plan kitchen/living
- Beautiful mature garden
- Ground floor
- Share of Freehold
- Large cellar

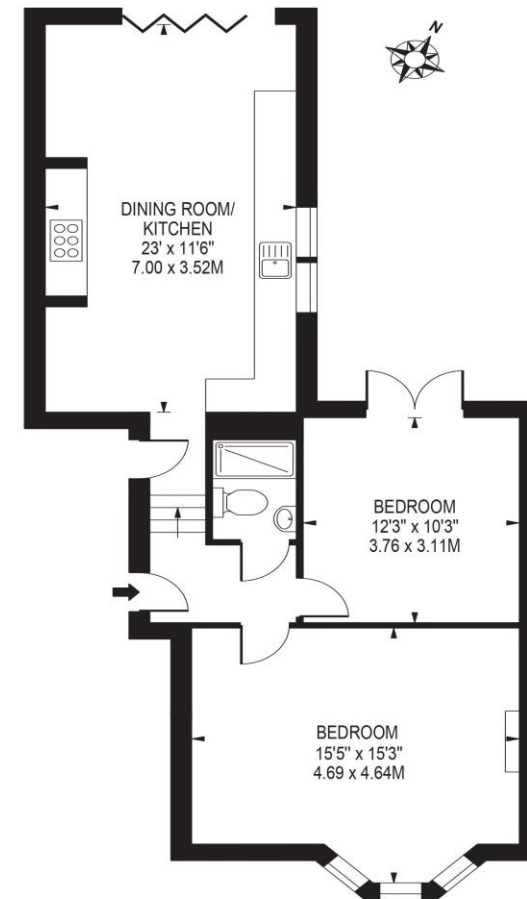
# Lewin Road, SW16 6JU

A beautiful two-bedroom garden flat of one of Streathams premium roads. This beautiful flat comprises of two double bedrooms, family bathroom, large cellar and an open plan kitchen/living room that stretches out onto a mature landscaped garden complete with outdoor storage. The property is set within an imposing Victorian property and retains a number of original features including a feature fireplace, high ceilings and cornicing. The property has potential to extend into the side and rear (STPP). The flat is ideally positioned on the quiet, wide and treelined Lewin road which is a short walk from Streatham Common station with direct access to central London via London bridge and London Victoria.



Telephone 020 3780 0000  
Website oaksestateagents.com  
Email streatham@oaksestateagents.com

## LEWIN ROAD APPROXIMATE GROSS INTERNAL FLOOR AREA: 698 SQ FT - 64.87 SQ M



GROUND FLOOR  
FOR ILLUSTRATION PURPOSES ONLY

THIS FLOOR PLAN SHOULD BE USED AS A GENERAL OUTLINE FOR GUIDANCE ONLY AND DOES NOT CONSTITUTE IN WHOLE OR IN PART AN OFFER OR CONTRACT. ANY INTENDING PURCHASER OR LESSEE SHOULD SATISFY THEMSELVES BY INSPECTION, SEARCHES, ENQUIRIES AND FULL SURVEY AS TO THE CORRECTNESS OF EACH STATEMENT. ANY AREAS, MEASUREMENTS OR DISTANCES QUOTED ARE APPROXIMATE AND SHOULD NOT BE USED TO VALUE A PROPERTY OR BE THE BASIS OF ANY SALE OR LET.

