



Burkitt House, Norbury Avenue

CR7 8AJ

Offers in Excess of

- Two Large bedrooms
- Open Plan Living
- Large directly accessed Private Garden

- Private Off- Road Parking
- Ground Floor Conversion
- No Onward Chain

Burkitt House, Norbury Avenue

CR7 8AJ

A stunning example of a two-bedroom conversion flat set within an imposing period property and offered to the market chain-free. This beautiful home comprises; a large double bedroom with a hidden office space, a further double bedroom, a living/ kitchen room that is flooded with natural light through large French doors, a modern bathroom and a large private garden to the rear of the property. The flat benefits from ample storage including built in wardrobes in both bedrooms, a utility room and large shed. Set on the ground floor the flat has a modern feel while retaining a period charm. The large garden at the rear would be ideal for entertaining in the summer months as it is accessed directly from the living space. The flat is ideally located near to Norbury Station with direct access to Clapham Junction, Balham, London Victoria, and London Bridge. The shops, bars and restaurants of Streatham High Road and Norbury are within easy reach of the property. In addition, Norbury Park is on your doorstep and the wide, open and leafy Streatham Common is just a short walk away.



Telephone

020 3780 0000

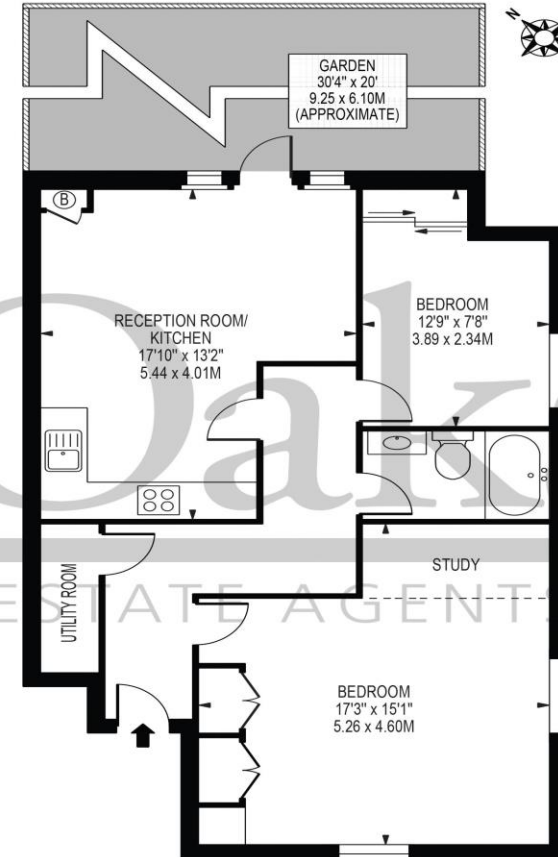
Website

oaksestateagents.com

Email

streatham@oaksestateagents.com

**BURKITT HOUSE,
NORBURY AVENUE**
APPROXIMATE GROSS INTERNAL FLOOR AREA: 705 SQ FT - 65.50 SQ M



GROUND FLOOR
FOR ILLUSTRATION PURPOSES ONLY

THIS FLOOR PLAN SHOULD BE USED AS A GENERAL OUTLINE FOR GUIDANCE ONLY AND DOES NOT CONSTITUTE IN WHOLE OR IN PART AN OFFER OR CONTRACT. ANY INTENDING PURCHASER OR LESSEE SHOULD SATISFY THEMSELVES BY INSPECTION, SEARCHES, ENQUIRIES AND FULL SURVEY AS TO THE CORRECTNESS OF EACH STATEMENT. ANY AREAS, MEASUREMENTS OR DISTANCES QUOTED ARE APPROXIMATE AND SHOULD NOT BE USED TO VALUE A PROPERTY OR BE THE BASIS OF ANY SALE OR LET.