



## Canterbury Grove, SE27 0PB

- Share of Freehold
- Period Features
- Over 556 Sq. Ft
- Excellent Views
- Close To Transport Links
- Close To Wide Array of Popular Local Amenities

**Offers in Excess of £300,000**



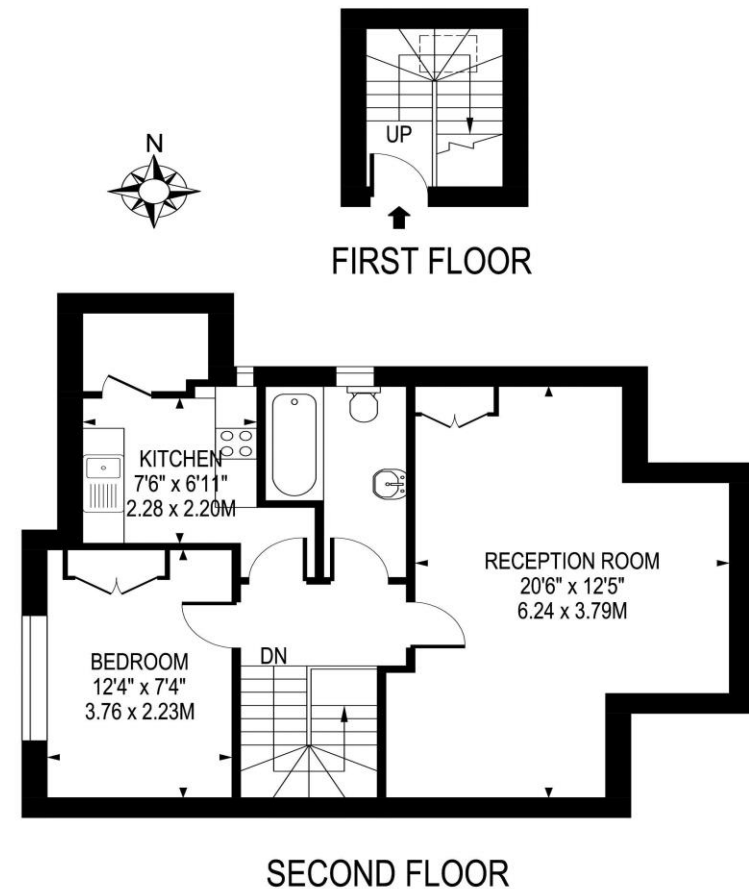
# Canterbury Grove, SE27 0PB

Independent estate agents Oaks are elated to bring to the market this exceptional top floor period conversion flat, being sold with a share of freehold. Located in the heart of West Norwood this charming top floor conversion comprises of one double bedroom, modern fitted bathroom, capacious kitchen, light and airy reception room and ample storage space. Further benefiting from free on street parking and being positioned in accessible location to West Norwood Train Station & High Street.



## FLAT 5, CANTERBURY GROVE

APPROXIMATE GROSS INTERNAL FLOOR AREA: 556 SQ FT- 51.70 SQ M



FOR ILLUSTRATION PURPOSES ONLY

THIS FLOOR PLAN SHOULD BE USED AS A GENERAL OUTLINE FOR GUIDANCE ONLY AND DOES NOT CONSTITUTE IN WHOLE OR IN PART AN OFFER OR CONTRACT. ANY INTENDING PURCHASER OR LESSEE SHOULD SATISFY THEMSELVES BY INSPECTION, SEARCHES, ENQUIRIES AND FULL SURVEY AS TO THE CORRECTNESS OF EACH STATEMENT. ANY AREAS, MEASUREMENTS OR DISTANCES QUOTED ARE APPROXIMATE AND SHOULD NOT BE USED TO VALUE A PROPERTY OR BE THE BASIS OF ANY SALE OR LET.

Telephone 020 3780 0000  
Website oaksestateagents.com  
Email streatham@oaksestateagents.com

