



Gleneldon Road SW16 2AY

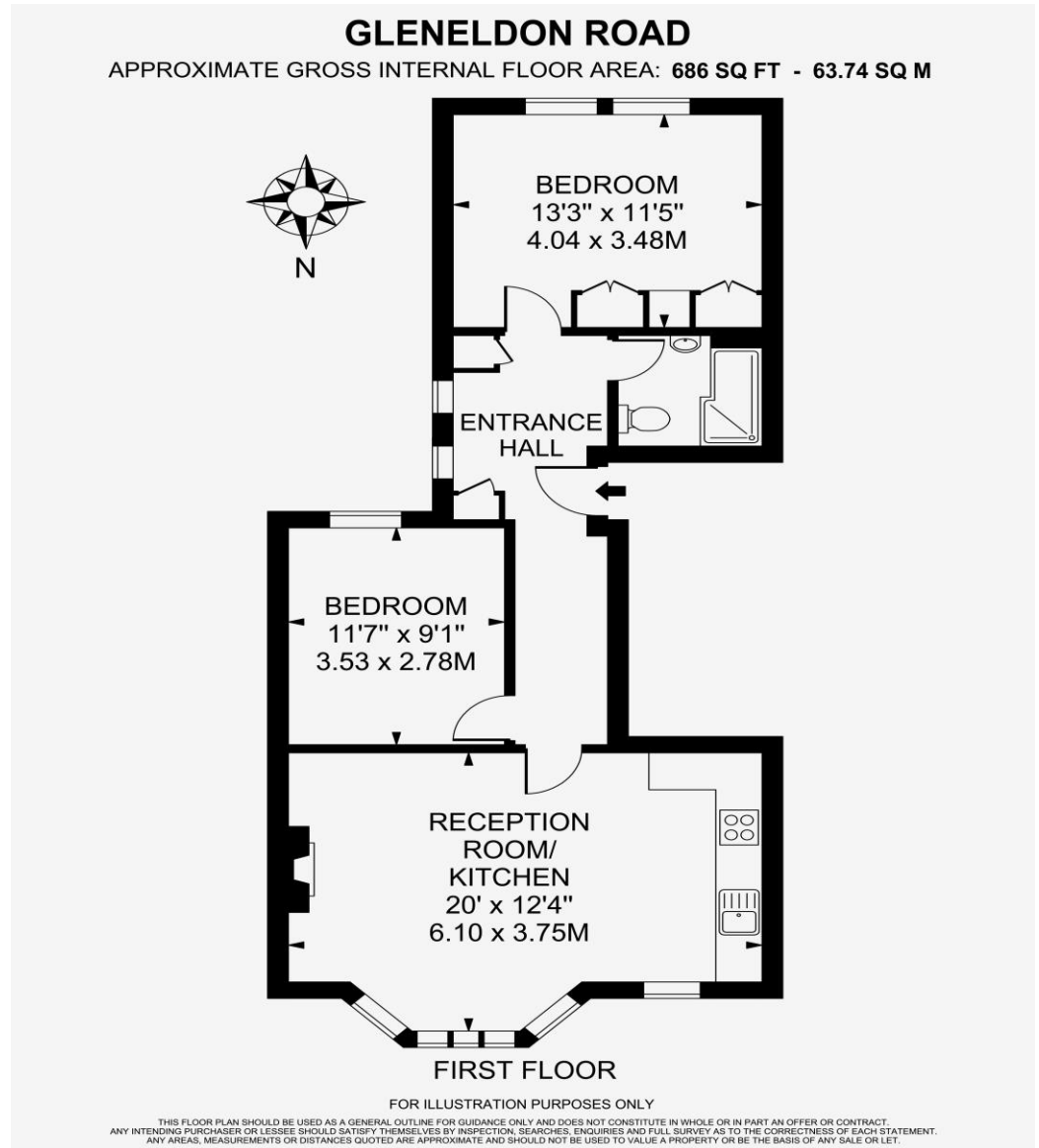
£465,000

- Two double bedrooms
- First floor
- Open plan living
- Garden
- Quiet location
- Grand dimensions

Gleneldon Road

SW16 2AY

Oaks Estate Agents of Streatham are pleased to present this luxurious two double bedroom first floor flat located in the heart of Streatham. Boasting over 680 square feet, the property includes a large reception with open plan kitchen, two bedrooms, renovated bathroom and private garden. Perfectly positioned on a quiet side street, the property is a short walk from the excellent transport links of Streatham Station overground, ideal for any commuter, as well as the variety of local amenities and school catchments of the area. Offered to the market with a variety of original features including a working fireplace and hardwood floors, combined with modern touches.



Telephone

020 3780 0000

Website

oaksestateagents.com

Email

streatham@oaksestateagents.com