



Canmore Gardens, SW16 5BD

£675,000

- Selection of New Homes
- Four bedrooms
- Two bathrooms
- Downstairs w/c
- Designated parking
- Outstanding local schools

Canmore Gardens, SW16 5BD

Oaks Estate Agents in Streatham are delighted to present to the market, Canmore Gardens; an exciting development available in the heart of Streatham. Situated on a popular, quiet residential road, these high specification new build houses have been elegantly crafted and have been finished to an immaculate finish.

Each house comprises of four generously sized bedrooms, two contemporary bathrooms suites, garden, and a fully equipped modern kitchen and living space complete with built in appliances, finished to a superior standard, creating the perfect space for relaxation and entertainment.

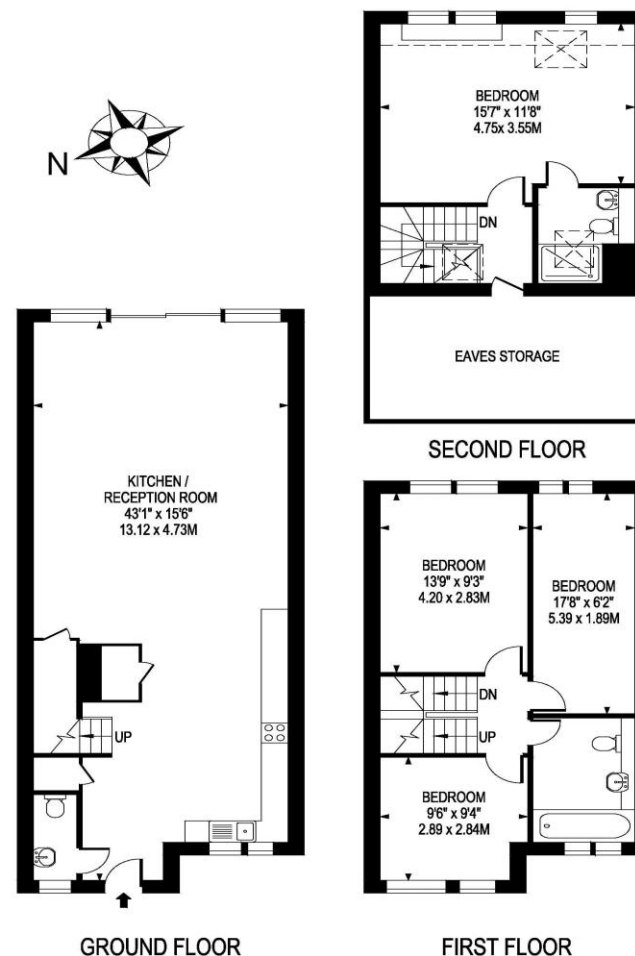
If it is access into the City that you require, Canmore Gardens is perfectly positioned close to neighbouring Streatham Common station, making destinations such as London Victoria, London Bridge and Clapham Junction easily accessible.



Telephone 020 3780 0000
Website oaksestateagents.com
Email streatham@oaksestateagents.com

CANMORE GARDENS

APPROXIMATE GROSS INTERNAL FLOOR AREA: 1380.8 SQ FT- 128.30 SQ M



FOR ILLUSTRATION PURPOSES ONLY

THIS FLOOR PLAN SHOULD BE USED AS A GENERAL OUTLINE FOR GUIDANCE ONLY AND DOES NOT CONSTITUTE IN WHOLE OR IN PART AN OFFER OR CONTRACT. ANY INTENDING PURCHASER OR LESSEE SHOULD SATISFY THEMSELVES BY INSPECTION, SEARCHES, ENQUIRIES AND FULL SURVEY AS TO THE CORRECTNESS OF EACH STATEMENT. ANY AREAS, MEASUREMENTS OR DISTANCES QUOTED ARE APPROXIMATE AND SHOULD NOT BE USED TO VALUE A PROPERTY OR BE THE BASIS OF ANY SALE OR LET.