



Mitcham Parkside, CR4 1HB

£330,000

- Available on the Help to Buy scheme
- 551 sq. ft. of modern day living space
- Allocated parking space

- Private terrace
- Designer appliances
- Excellent transport links into The City

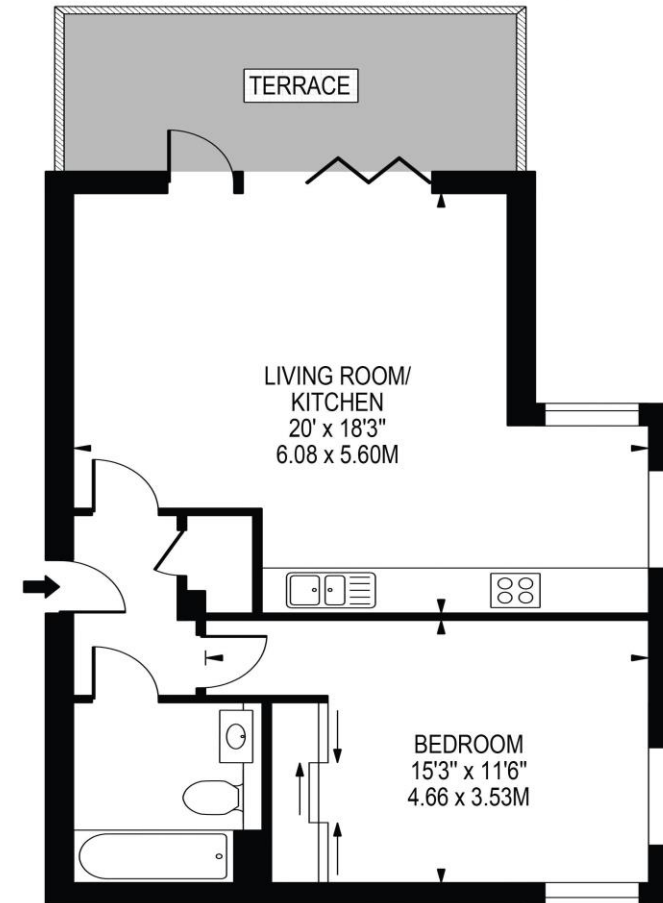
Mitcham Parkside, CR4 1HB

Oaks Estate Agents are delighted to present to the market, Mitcham Parkside; a spectacular and luxurious development built to exacting standards by the award winning and well renowned Aquinna Homes, situated in the vibrant community of Mitcham, an up-and-coming suburban area in South London. Located on the periphery of Mitcham Common on the well-regarded residential road, Commonsides East, this wonderful and lavish development has been carefully and elegantly crafted and is available on the popular Help to Buy scheme. Situated on the top floor, 9 Mitcham Parkside benefits from an impressive 551 sq. ft. of living space and comprises; large double bedroom, contemporary bathroom suite and spacious open plan modern fitted kitchen/reception room with direct access to private terrace.



MITCHAM PARKSIDE

APPROXIMATE GROSS INTERNAL FLOOR AREA: 551 SQ FT - 51.19 SQ M



FOR ILLUSTRATION PURPOSES ONLY

THIS FLOOR PLAN SHOULD BE USED AS A GENERAL OUTLINE FOR GUIDANCE ONLY AND DOES NOT CONSTITUTE IN WHOLE OR IN PART AN OFFER OR CONTRACT. ANY INTENDING PURCHASER OR LESSEE SHOULD SATISFY THEMSELVES BY INSPECTION, SEARCHES, ENQUIRIES AND FULL SURVEY AS TO THE CORRECTNESS OF EACH STATEMENT. ANY AREAS, MEASUREMENTS OR DISTANCES QUOTED ARE APPROXIMATE AND SHOULD NOT BE USED TO VALUE A PROPERTY OR BE THE BASIS OF ANY SALE OR LET.

Telephone 0203 973 9700
Website www.oaksestateagents.com
Email croydon@oaksestateagents.com