

**Storrington Road**

**CR0 6PN**

**Monthly Rental Of**

- Immaculate condition throughout
- Three well-proportioned bedrooms
- Open plan double reception

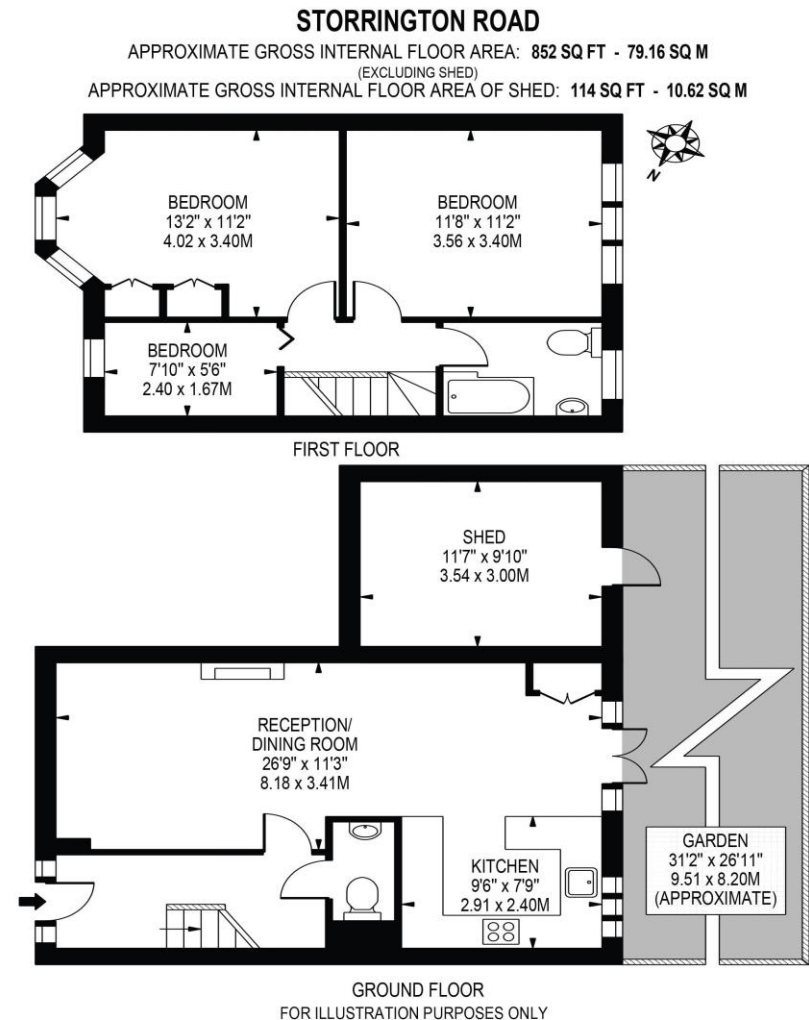
- Modern fitted kitchen
- Spacious garden with astroturf
- Excellent transport links into The City

**Oaks** 

# Storrington Road

# CR0 6PN

Absolutely stunning end of terrace three bedroom house located on a very popular secluded road in the heart of Addiscombe. Immaculately presented from top to bottom, this wonderful home has been lovingly looked after and comprises; three well-proportioned bedrooms, spacious double reception room, modern fitted kitchen, contemporary bathroom suite, shed and beautifully presented garden with artificial turf. Ideal for a family and anybody requiring access into The City, Storrington Road is situated close to a number of well-regarded schools, East Croydon station and a number of local tram stops. East Croydon station will take you into London Bridge or London Victoria within 15 minutes in one direction. In addition, the property is also positioned close a wide array of popular local amenities.



THIS FLOOR PLAN SHOULD BE USED AS A GENERAL OUTLINE FOR GUIDANCE ONLY AND DOES NOT CONSTITUTE IN WHOLE OR IN PART AN OFFER OR CONTRACT. ANY INTENDING PURCHASER OR LESSEE SHOULD SATISFY THEMSELVES BY INSPECTION, SEARCHES, ENQUIRIES AND FULL SURVEY AS TO THE CORRECTNESS OF EACH STATEMENT. ANY AREAS, MEASUREMENTS OR DISTANCES QUOTED ARE APPROXIMATE AND SHOULD NOT BE USED TO VALUE A PROPERTY OR BE THE BASIS OF ANY SALE OR LET.

Telephone

0203 973 9700

Website

[www.oaksestateagents.com](http://www.oaksestateagents.com)

Email

[croydon@oaksestateagents.com](mailto:croydon@oaksestateagents.com)