



Besley Street SW16 6BG

- One Double Bedroom
- Ground Floor Conversion
- Excellent Condition
- Private Office In Garden
- Great Transport Links
- London Borough Of Wandsworth

OIEO £375,000

Oaks 

Besley Street SW16 6BG

Oaks of Streatham are honoured to offer to the market this exquisite ground floor period conversion, situated on a quiet residential street in the borough of Wandsworth. This delightful conversion has been refurbished to a high standard throughout benefiting from a spacious open plan kitchen/reception room with direct access to a private garden. Further consisting of a modern fitted bathroom, well sized double bedroom and a stunning work from home office to the rear of the garden.



Telephone

020 3780 0000

Website

oaksestateagents.com

Email

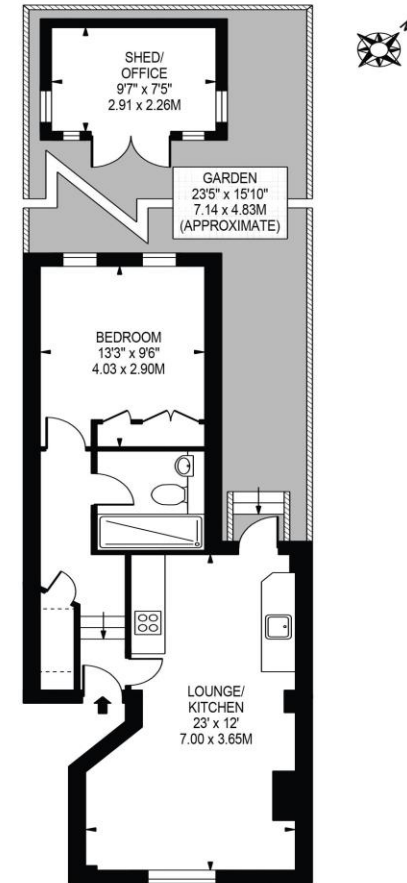
gabriel@oaksestateagents.com

BESLEY STREET, SW16

APPROXIMATE GROSS INTERNAL FLOOR AREA: 490 SQ FT - 45.54 SQ M

(EXCLUDING SHED)

APPROXIMATE GROSS INTERNAL FLOOR AREA OF SHED: 72 SQ FT - 6.67 SQ M



GROUND FLOOR
FOR ILLUSTRATION PURPOSES ONLY

THIS FLOOR PLAN SHOULD BE USED AS A GENERAL OUTLINE FOR GUIDANCE ONLY AND DOES NOT CONSTITUTE IN WHOLE OR IN PART AN OFFER OR CONTRACT. ANY INTENDING PURCHASER OR LESSEE SHOULD SATISFY THEMSELVES BY INSPECTION, SEARCHES, ENQUIRIES AND FULL SURVEY AS TO THE CORRECTNESS OF EACH STATEMENT. ANY AREAS, MEASUREMENTS OR DISTANCES QUOTED ARE APPROXIMATE AND SHOULD NOT BE USED TO VALUE A PROPERTY OR BE THE BASIS OF ANY SALE OR LET.