



Stirling Close SW16 5HH

£300,000

- Ground Floor Apartment
- Two Bedrooms
- Private Garden

- Spacious Accommodation
- Off Street Parking
- No Onward Chain

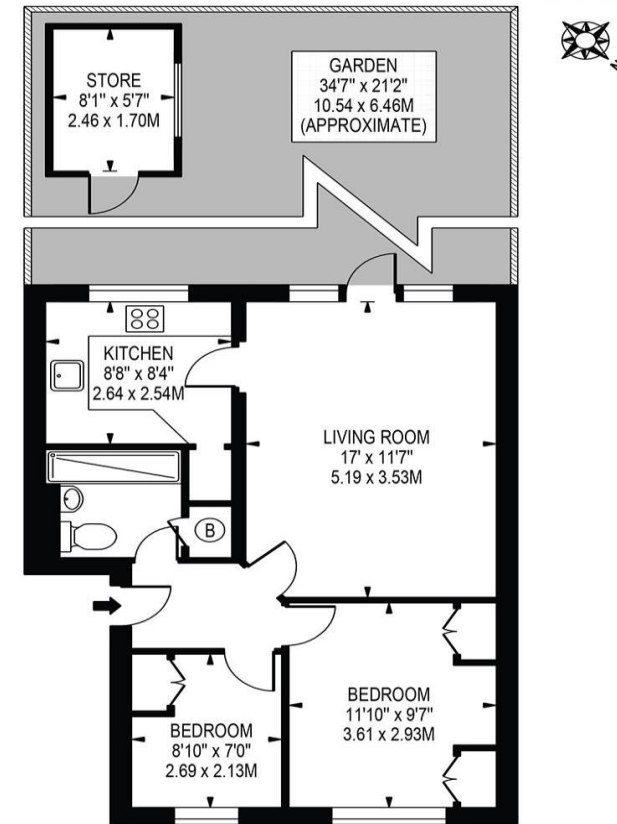


Stirling Close SW16 5HH

Located in a secluded modern development is this delightful ground floor apartment offers two bedrooms, one of which is fitted a built in wardrobes. The property is offered in good order throughout comprising a separate kitchen and a spacious reception room with double doors leading onto mature garden. Benefitting further from being conveniently positioned a short walk from Streatham Common Station and being exposed to a wide range of local amenities. An excellent opportunity for those looking to buy their first property as well as investors looking for a new opportunity.



**STIRLING CLOSE,
STREATHAM VALE, SW16 5HH**
APPROXIMATE GROSS INTERNAL FLOOR AREA: 544 SQ FT - 50.53 SQ M
(EXCLUDING STORE)
APPROXIMATE GROSS INTERNAL FLOOR AREA OF STORE : 45 SQ FT 4.18 SQ M



GROUND FLOOR
FOR ILLUSTRATION PURPOSES ONLY

THIS FLOOR PLAN SHOULD BE USED AS A GENERAL OUTLINE FOR GUIDANCE ONLY AND DOES NOT CONSTITUTE IN WHOLE OR IN PART AN OFFER OR CONTRACT. ANY INTENDING PURCHASER OR LESSEE SHOULD SATISFY THEMSELVES BY INSPECTION, SEARCHES, ENQUIRIES AND FULL SURVEY AS TO THE CORRECTNESS OF EACH STATEMENT. ANY AREAS, MEASUREMENTS OR DISTANCES QUOTED ARE APPROXIMATE AND SHOULD NOT BE USED TO VALUE A PROPERTY OR BE THE BASIS OF ANY SALE OR LET.

Telephone 020 3780 0000
Website oaksestateagents.com
Email streatham@oaksestateagents.com

