



Stirling Close, SW16 5HH

- One double bedroom
- Ground floor flat
- Meticulously refurbished
- Communal Gardens
- Leasehold
- Excellent transport links

Offers in Excess of

Stirling Close, SW16 5HH

A beautiful ground floor flat set within the confines of a quiet, yet well located estate.

Finished to an immaculate standard throughout, this sizeable one bedroom flat is light and airy and benefits from a well proportioned kitchen, separate living room/dining room, bathroom, built-in storage cupboard and one double bedroom. It has doors leading out onto a communal garden as well as off street parking. This property has been tastefully modernised throughout (including new double glazed windows and back door) and would be perfect for first time buyers or investors alike.

This home would suit any commuter requiring access into The City due to its close proximity to both Streatham Common and Mitcham Eastfields stations, providing you with direct access into Clapham Junction, London Victoria, London Bridge, London Blackfriars and St Pancras International. The number 60 and 118 bus routes are also within a minute's walk with services to Morden, Brixton and Streatham Hill.

Demand is expected to be high, so we thoroughly recommend an internal viewing to avoid disappointment.



Telephone

020 3780 0000

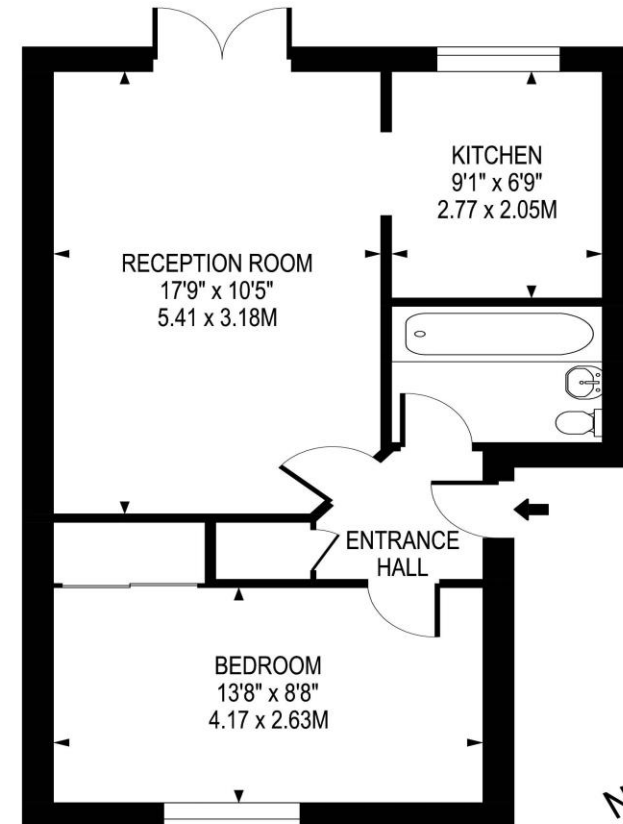
Website

oaksestateagents.com

Email

streatham@oaksestateagents.com

STIRLING CLOSE
APPROXIMATE GROSS INTERNAL FLOOR AREA:
457 SQ FT- 42.50 SQ M



FIRST FLOOR



FOR ILLUSTRATION PURPOSES ONLY

THIS FLOOR PLAN SHOULD BE USED AS A GENERAL OUTLINE FOR GUIDANCE ONLY AND DOES NOT CONSTITUTE IN WHOLE OR IN PART AN OFFER OR CONTRACT. ANY INTENDING PURCHASER OR LESSEE SHOULD SATISFY THEMSELVES BY INSPECTION, SEARCHES, ENQUIRIES AND FULL SURVEY AS TO THE CORRECTNESS OF EACH STATEMENT. ANY AREAS, MEASUREMENTS OR DISTANCES QUOTED ARE APPROXIMATE AND SHOULD NOT BE USED TO VALUE A PROPERTY OR BE THE BASIS OF ANY SALE OR LET.