



Adams Way, CR0 6XR

- Two bedroom freehold house
- Allocated parking space
- Excellent transport links into The City

Offers in Excess of £275,000

- 663 sq. ft. of modern day living space
- Located within a quiet residential close
- Close to wide array of local amenities

Adams Way, CR0 6XR

Oaks Estate Agents in Croydon are delighted to present to the market this amazing two bedroom house located within a quiet residential close. Tastefully decorated and lovingly cared for by the current owners, Adams Way is arranged over two floors and comprises; two well-proportioned double bedrooms, spacious reception, modern fitted kitchen and a contemporary bathroom suite. In addition, the property benefits from a lovely garden, shed with ample storage and an allocated parking space. The property is ideal for any commuter requiring access into the City as the property is situated close to the tram link, Norwood Junction and East Croydon stations which offer direct services into London Bridge (approximately 12 minutes), London Victoria and London Overground stations.



Telephone

0203 973 9700

Website

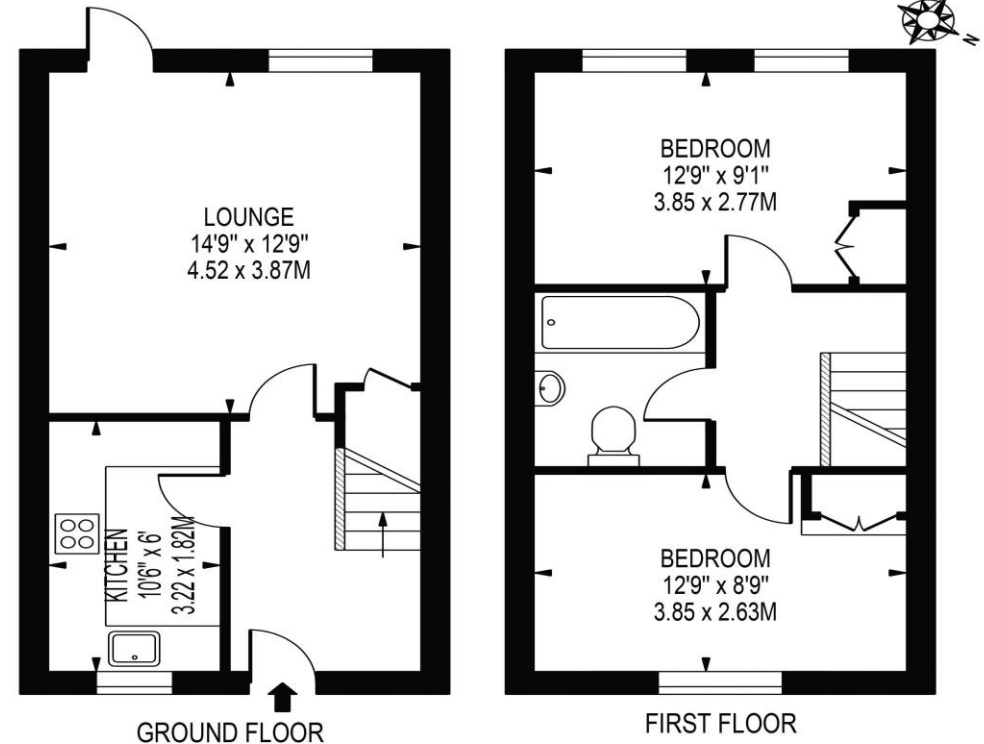
www.oaksestateagents.com

Email

croydon@oaksestateagents.com

ADAM'S WAY

APPROXIMATE GROSS INTERNAL FLOOR AREA: 663 SQ FT - 61.62 SQ M



FOR ILLUSTRATION PURPOSES ONLY

THIS FLOOR PLAN SHOULD BE USED AS A GENERAL OUTLINE FOR GUIDANCE ONLY AND DOES NOT CONSTITUTE IN WHOLE OR IN PART AN OFFER OR CONTRACT. ANY INTENDING PURCHASER OR LESSEE SHOULD SATISFY THEMSELVES BY INSPECTION, SEARCHES, ENQUIRIES AND FULL SURVEY AS TO THE CORRECTNESS OF EACH STATEMENT. ANY AREAS, MEASUREMENTS OR DISTANCES QUOTED ARE APPROXIMATE AND SHOULD NOT BE USED TO VALUE A PROPERTY OR BE THE BASIS OF ANY SALE OR LET.