



Aberfoyle Road, SW16 5AA

£575,000

- Three bedrooms
- Heart of Streatham Vale
- Short walk from Streatham Common Station
- Separate kitchen
- Large sunny garden
- Close to wide array of local amenities



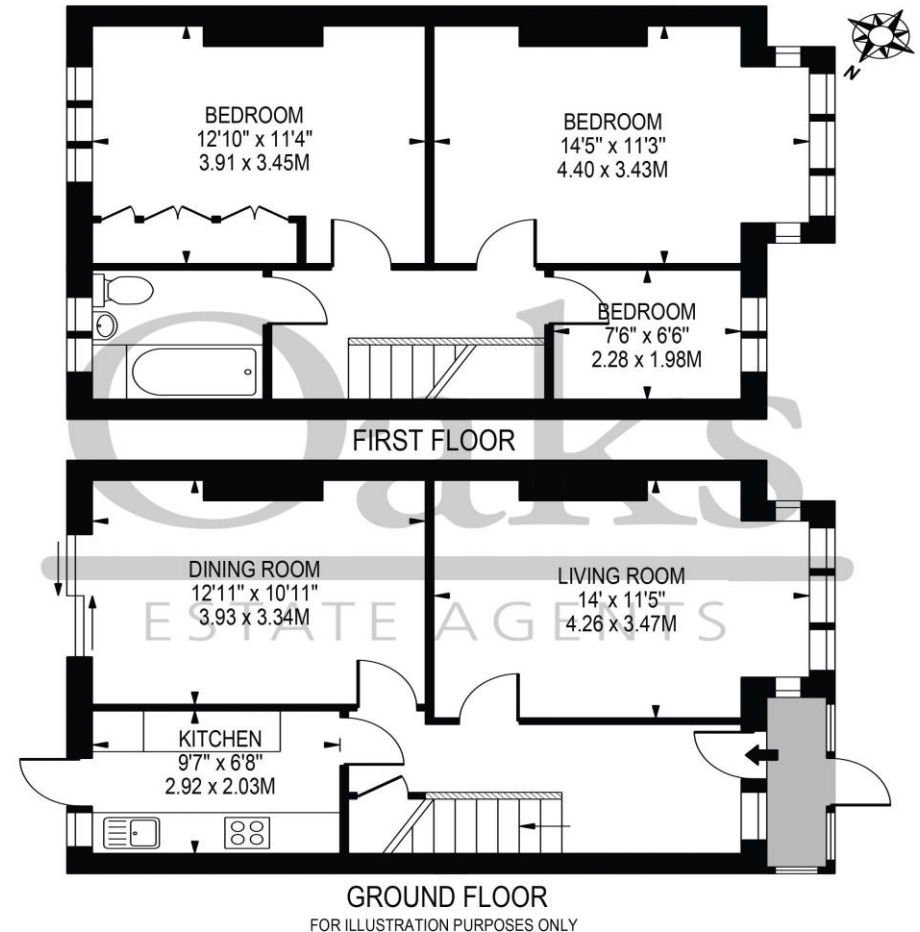
Aberfoyle Road, SW16 5AA

A beautiful mid-terraced three bedroom home in the heart of Streatham Vale. It has been meticulously looked after by the current owners and comprises; three well-proportioned bedrooms, modern family bathroom, kitchen with modern integrated units, living room and which leads onto a large sunny garden. This freehold house benefits from having been modernised throughout and would be an ideal purchase for a first time buyer or home mover looking for more space. The loft space has also been boarded and has Velux windows perfect for storage. The property is ideally located in Streatham Vale and is a walk or short bus journey from Streatham Common Station with direct access to central London via Clapham junction, London Bridge and London Victoria.



ABERFOYLE ROAD

APPROXIMATE GROSS INTERNAL FLOOR AREA: 939 SQ FT - 87.28 SQ M



THIS FLOOR PLAN SHOULD BE USED AS A GENERAL OUTLINE FOR GUIDANCE ONLY AND DOES NOT CONSTITUTE IN WHOLE OR IN PART AN OFFER OR CONTRACT. ANY INTENDING PURCHASER OR LESSEE SHOULD SATISFY THEMSELVES BY INSPECTION, SEARCHES, ENQUIRIES AND FULL SURVEY AS TO THE CORRECTNESS OF EACH STATEMENT. ANY AREAS, MEASUREMENTS OR DISTANCES QUOTED ARE APPROXIMATE AND SHOULD NOT BE USED TO VALUE A PROPERTY OR BE THE BASIS OF ANY SALE OR LET.

Telephone

0203 973 9700

Website

www.oaksestateagents.com

Email

croydon@oaksestateagents.com