



Westcote Road, SW16 6BN

£650,000

- Three-bedroom freehold property
- Potential to extend and add value
- Two bathrooms

- Close to Tooting Common
- Plenty of period features
- Large decked garden

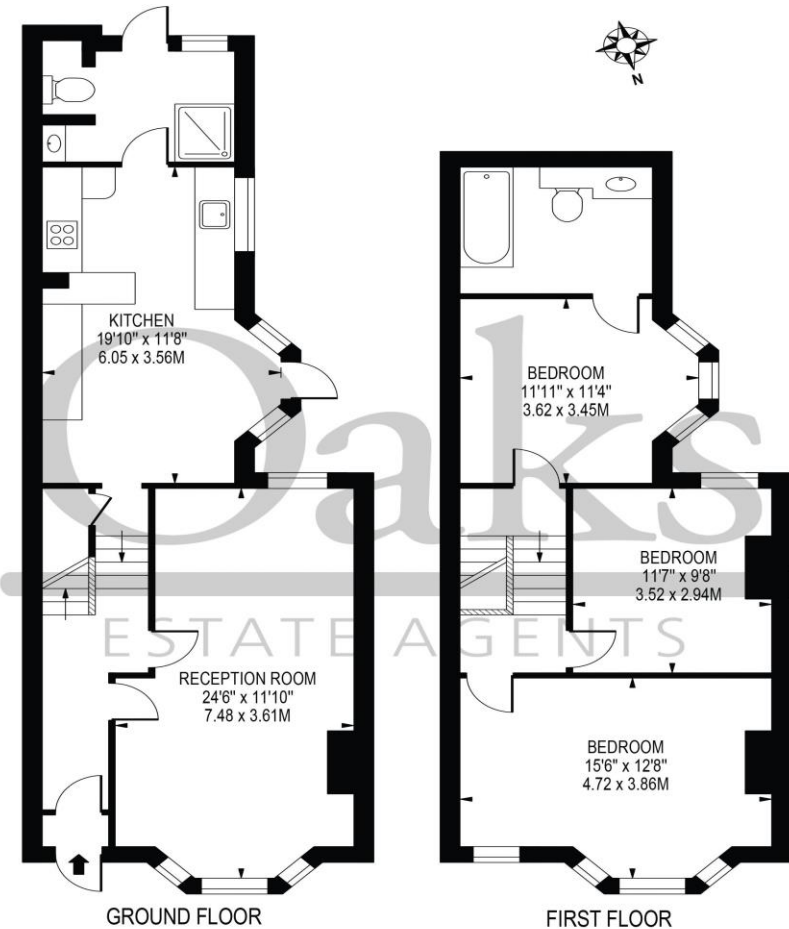
Westcote Road, SW16 6BN

A beautiful three-bedroom property set on the treelined Westcote Road. This home would be perfect for someone looking to extend and improve this wonderful example of a period home. It comprises; three double bedrooms, large living room, kitchen, bathroom and decked garden to the rear. The property also benefits from its own parking space at the front. This lovely home would suit any commuter requiring access into The City due its close proximity to Streatham Common station with direct access to central London Via London Bridge and London Victoria. Eardley Road is positioned close to a wide array of popular local amenities local to Streatham and is a walk from the wide, open and leafy spaces of Streatham and Tooting Commons.



WESTCOTE ROAD

APPROXIMATE GROSS INTERNAL FLOOR AREA: 1186 SQ FT - 110.20 SQ M



THIS FLOOR PLAN SHOULD BE USED AS A GENERAL OUTLINE FOR GUIDANCE ONLY AND DOES NOT CONSTITUTE IN WHOLE OR IN PART AN OFFER OR CONTRACT. ANY INTENDING PURCHASER OR LESSEE SHOULD SATISFY THEMSELVES BY INSPECTION, SEARCHES, ENQUIRIES AND FULL SURVEY AS TO THE CORRECTNESS OF EACH STATEMENT. ANY AREAS, MEASUREMENTS OR DISTANCES QUOTED ARE APPROXIMATE AND SHOULD NOT BE USED TO VALUE A PROPERTY OR BE THE BASIS OF ANY SALE OR LET.

Telephone 020 3780 0000
Website www.oaksestateagents.com
Email streatham@oaksestateagents.com