



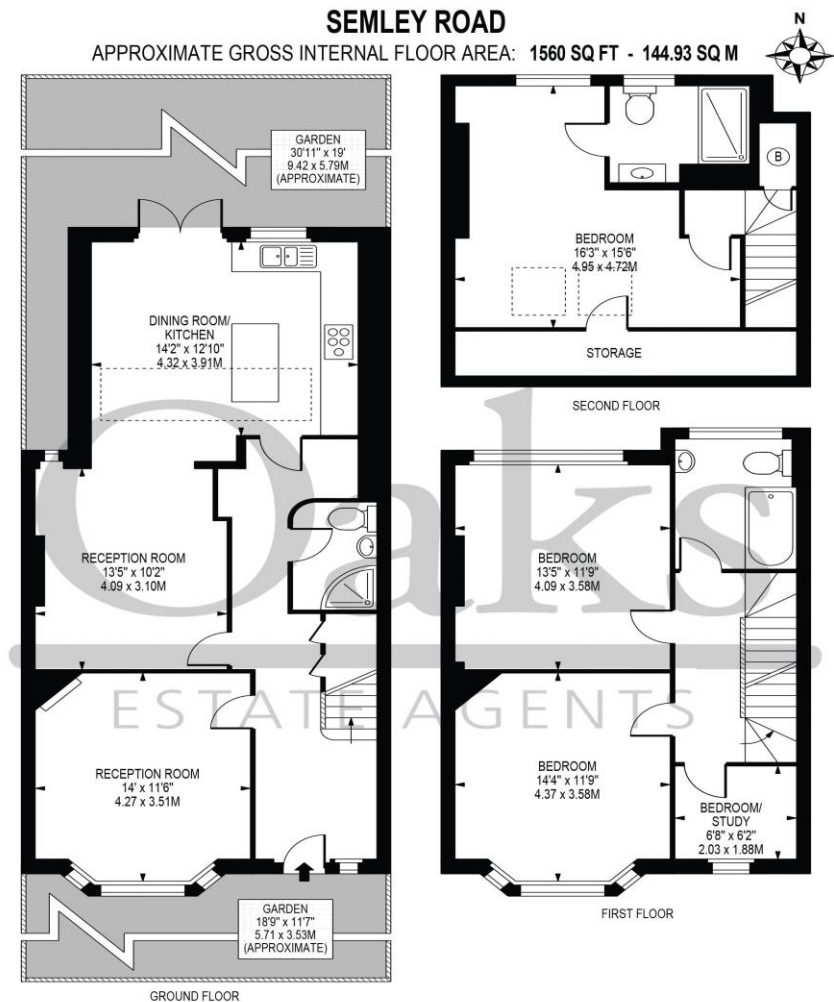
Semley Road, SW16 4PJ

£650,000

- Four bedroom house
- Extended to the loft and rear
- Separate living room
- Garden to the rear
- Close to Norbury station
- Three bathrooms

Semley Road, SW16 4PJ

A beautiful four-bedroom house that has been lovingly extended and refurbished to the highest standard throughout. This home benefits from a period feel including feature fireplaces, Karndean floors throughout downstairs and underfloor heating in the kitchen. It is in excellent decorative order throughout and comprises; a large living room with high ceilings and bay window, an extended open plan kitchen/dining room complete with a centre island, four well-proportioned bedrooms, three bathrooms and a paved garden to the rear. It has been extended to the rear and into the loft to create a large amount of living space. This lovely home would suit any commuter requiring access into The City due to its close proximity to Norbury station with direct access to Central London Via London Bridge and London Victoria. Semley Road is positioned close to a wide array of popular local amenities local to Norbury and is a short bus journey from the wide, open and leafy spaces of Streatham Common.



FOR ILLUSTRATION PURPOSES ONLY

THIS FLOOR PLAN SHOULD BE USED AS A GENERAL OUTLINE FOR GUIDANCE ONLY AND DOES NOT CONSTITUTE IN WHOLE OR IN PART AN OFFER OR CONTRACT. ANY INTENDING PURCHASER OR LESSEE SHOULD SATISFY THEMSELVES BY INSPECTION, SEARCHES, ENQUIRIES AND FULL SURVEY AS TO THE CORRECTNESS OF EACH STATEMENT. ANY AREAS, MEASUREMENTS OR DISTANCES QUOTED ARE APPROXIMATE AND SHOULD NOT BE USED TO VALUE A PROPERTY OR BE THE BASIS OF ANY SALE OR LET.

Telephone 020 3780 0000
Website oaksestateagents.com
Email streatham@oaksestateagents.com

