



## Oakdale Road, SW16 2HL

£390,000

- Split level property
- Chain free
- Beautiful shared garden
- Two double bedrooms
- Separate kitchen
- Long lease

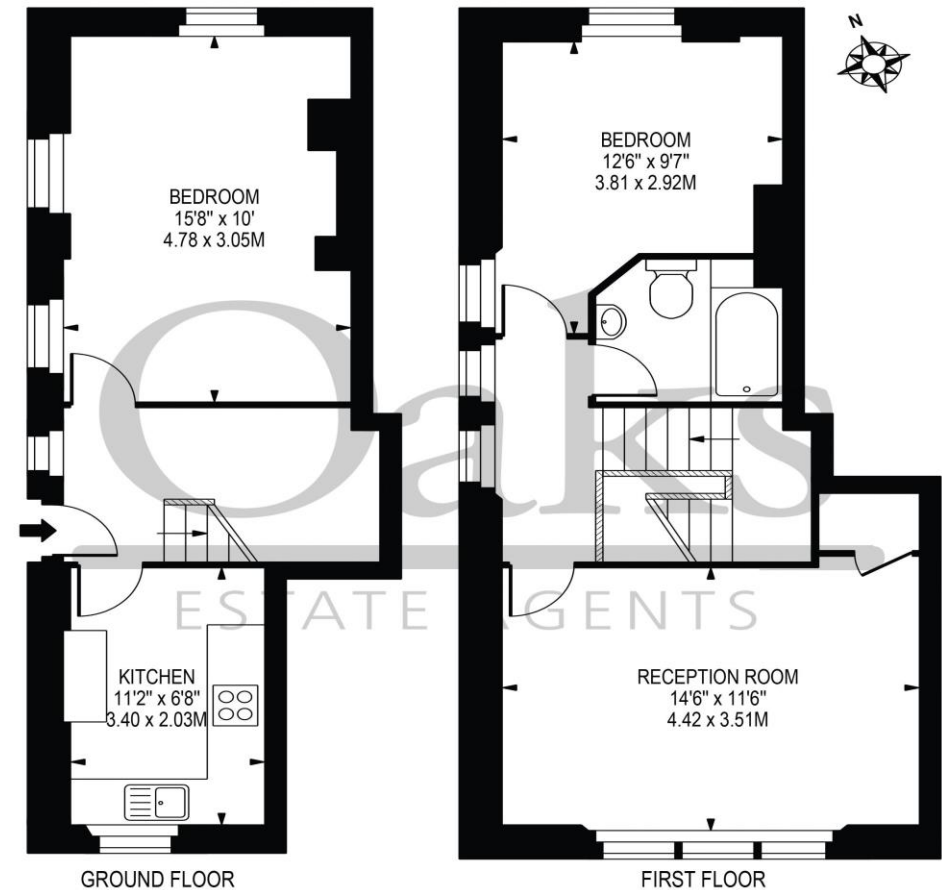
# Oakdale Road, SW16 2HL

A beautiful split level conversion flat set within the confines of an imposing double fronted property in the heart of Streatham. The well-appointed property comprises of two large double bedrooms with built in storage, separate kitchen complete with integrated units, large living room and a family bathroom. This home has been well looked after by the current owners and benefits from a number of period features throughout and has the feel of a house with it's own front door. The property benefits from a shared garden that are beautifully maintained. The flat is ideally located near to Streatham Station with direct access to Clapham Junction, Balham, London Victoria, and London Bridge. The shops, bars and restaurants of Streatham High Road and West Norward are within easy reach of the property including a M&S and Aldi. In addition the wide, open and leafy Streatham Common is just a short walk away from the property.



## OAKDALE ROAD

APPROXIMATE GROSS INTERNAL FLOOR AREA: 726 SQ FT - 67.45 SQ M



FOR ILLUSTRATION PURPOSES ONLY

THIS FLOOR PLAN SHOULD BE USED AS A GENERAL OUTLINE FOR GUIDANCE ONLY AND DOES NOT CONSTITUTE IN WHOLE OR IN PART AN OFFER OR CONTRACT. ANY INTENDING PURCHASER OR LESSEE SHOULD SATISFY THEMSELVES BY INSPECTION, SEARCHES, ENQUIRIES AND FULL SURVEY AS TO THE CORRECTNESS OF EACH STATEMENT. ANY AREAS, MEASUREMENTS OR DISTANCES QUOTED ARE APPROXIMATE AND SHOULD NOT BE USED TO VALUE A PROPERTY OR BE THE BASIS OF ANY SALE OR LET.

Telephone 020 3780 0000  
Website oaksestateagents.com  
Email streatham@oaksestateagents.com