



## Norbury Crescent, SW16 4JX

£375,000

- Two bedroom garden flat
- Separate eat in kitchen
- Direct access to garden
- Two double bedrooms
- Period property
- Ground floor

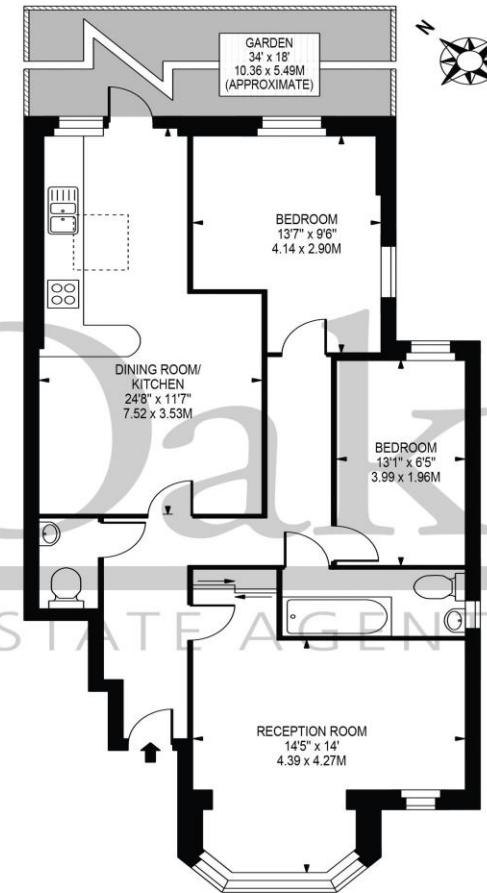
# Norbury Crescent, SW16 4JX

A stunning and unusually spacious two-bedroom garden flat set within the confines of a period property. This home comprises of two double bedrooms, a living room that is flooded with natural light, a large eat-in kitchen with plenty of space for a dining table, modern bathroom, with an additional separate WC, and direct access to a private garden at the rear. Set on the ground floor, this flat benefits from a lot of natural light and a modern feel while retaining a period charm. The large, sunny garden at the rear would be ideal for entertaining in the summer months. The flat is ideally located near to Norbury Station with direct access to Clapham Junction, Balham, London Victoria, and London Bridge. The shops, bars and restaurants of Streatham High Road and Norbury are within easy reach of the property. In addition the wide, open and leafy Streatham Common is just a walk or short bus journey away.



## NORBURY CRESCENT

APPROXIMATE GROSS INTERNAL FLOOR AREA: 900 SQ FT - 83.61 SQ M



GROUND FLOOR  
FOR ILLUSTRATION PURPOSES ONLY

THIS FLOOR PLAN SHOULD BE USED AS A GENERAL OUTLINE FOR GUIDANCE ONLY AND DOES NOT CONSTITUTE IN WHOLE OR IN PART AN OFFER OR CONTRACT. ANY INTENDING PURCHASER OR LESSEE SHOULD SATISFY THEMSELVES BY INSPECTION, SEARCHES, ENQUIRIES AND FULL SURVEY AS TO THE CORRECTNESS OF EACH STATEMENT. ANY AREAS, MEASUREMENTS OR DISTANCES QUOTED ARE APPROXIMATE AND SHOULD NOT BE USED TO VALUE A PROPERTY OR BE THE BASIS OF ANY SALE OR LET.

Telephone 020 3780 0000  
Website oaksestateagents.com  
Email streatham@oaksestateagents.com