



Highbarrow Road, CR0 6LD

Offers in Excess of £500,000

- Located in the heart of Addiscombe
- Three well-proportioned bedrooms
- Excellent condition throughout

- Ample storage throughout
- Close to wide array of local amenities
- Superb transport links into The City



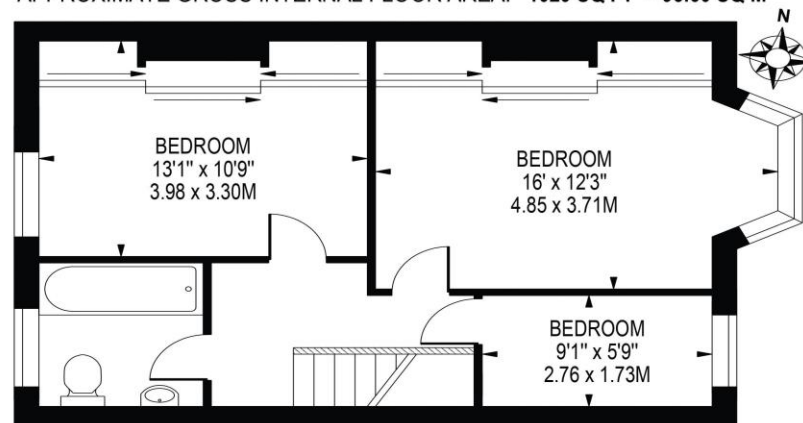
Highbarrow Road, CR0 6LD

Located on one of the most sought after roads in the heart of Addiscombe is this wonderful three bedroom terrace house. Light and airy throughout, Highbarrow Road offers 1,029 sq. ft. of living space and comprises; three well-proportioned bedrooms, a contemporary bathroom suite, reception room with large bay window, and dining room which leads onto a modern fitted kitchen and a spacious and well maintained garden. This lovely home would suit anybody requiring access into The City due its close proximity to East Croydon station and a number of local tram stops. East Croydon station will provide you with access into London Victoria, London Bridge and Clapham Junction and Gatwick Airport and Brighton in the opposite direction.

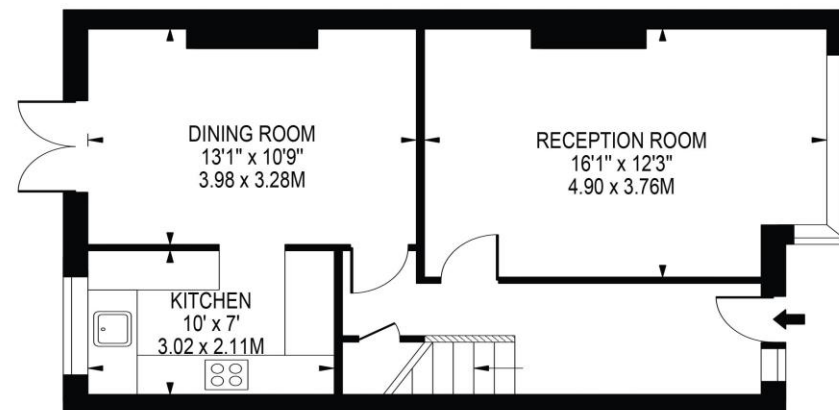


HIGHBARROW ROAD

APPROXIMATE GROSS INTERNAL FLOOR AREA: 1029 SQ FT - 95.60 SQ M



FIRST FLOOR



GROUND FLOOR
FOR ILLUSTRATION PURPOSES ONLY

THIS FLOOR PLAN SHOULD BE USED AS A GENERAL OUTLINE FOR GUIDANCE ONLY AND DOES NOT CONSTITUTE IN WHOLE OR IN PART AN OFFER OR CONTRACT. ANY INTENDING PURCHASER OR LESSEE SHOULD SATISFY THEMSELVES BY INSPECTION, SEARCHES, ENQUIRIES AND FULL SURVEY AS TO THE CORRECTNESS OF EACH STATEMENT. ANY AREAS, MEASUREMENTS OR DISTANCES QUOTED ARE APPROXIMATE AND SHOULD NOT BE USED TO VALUE A PROPERTY OR BE THE BASIS OF ANY SALE OR LET.

Telephone 0203 973 9700
Website www.oaksestateagents.com
Email croydon@oaksestateagents.com

