



Baldry Gardens, SW16 3DJ

Offers in Excess of £350,000

- Two-bedroom flat
- Period conversion
- Chain free
- Direct access to communal garden
- Large living space
- Close to amenities

Baldry Gardens, SW16 3DJ

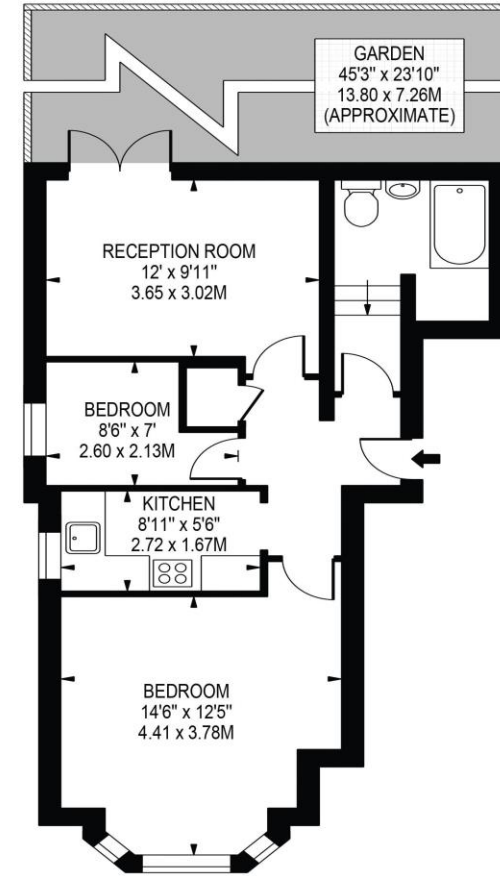
A beautiful two bedroom conversion flat set within the confines of an imposing period building in the heart of Streatham. This well-appointed property comprises of two double bedrooms with built in storage, separate kitchen complete with integrated units, large living/dining room and a family bathroom. The living room opens up onto a large communal gardens perfect for a summer BBQ or gathering. This home has been well looked after by the current owners and benefits from a number of period features throughout. The flat is ideally located near to Streatham Station with direct access to Clapham Junction, Balham, London Victoria, and London Bridge. The shops, bars and restaurants of Streatham High Road and West Norward are within easy reach of the property including a M&S and Aldi. In addition the wide, open and leafy Streatham Common is just a short walk away from the property.



Telephone 020 3780 0000
Website oaksestateagents.com
Email streatham@oaksestateagents.com

BALDRY GARDENS

APPROXIMATE GROSS INTERNAL FLOOR AREA: 535 SQ FT - 49.74 SQ M



GROUND FLOOR

FOR ILLUSTRATION PURPOSES ONLY

THIS FLOOR PLAN SHOULD BE USED AS A GENERAL OUTLINE FOR GUIDANCE ONLY AND DOES NOT CONSTITUTE IN WHOLE OR IN PART AN OFFER OR CONTRACT. ANY INTENDING PURCHASER OR LESSEE SHOULD SATISFY THEMSELVES BY INSPECTION, SEARCHES, ENQUIRIES AND FULL SURVEY AS TO THE CORRECTNESS OF EACH STATEMENT. ANY AREAS, MEASUREMENTS OR DISTANCES QUOTED ARE APPROXIMATE AND SHOULD NOT BE USED TO VALUE A PROPERTY OR BE THE BASIS OF ANY SALE OR LET.