



## Knollys Road, SW16 2JW

£395,000

- Two bedroom flat
- Separate kitchen
- Quiet tree lined street
- Flooded with natural light
- Communal gardens
- Purpose built flat

# Knollys Road, SW16 2JW

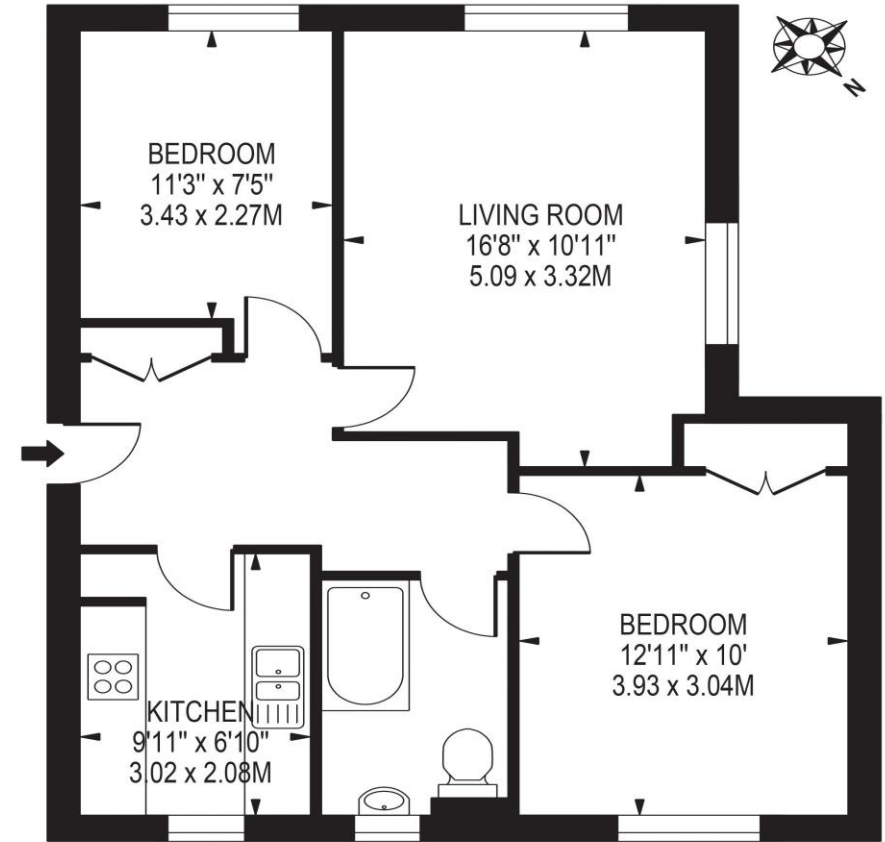
A stunning purpose built two-bedroom flat in between Streatham Hill and Tulse Hill stations with fast links to London Victoria and London Bridge. This stunning flat comprises; two double bedrooms that are flooded with natural light through large windows, a large double aspect living room with plenty of space for dining, a modern bathroom and a separate kitchen with integrated units. This wonderful home benefits from high ceilings and plenty of storage and communal gardens to the rear. It would be perfect for a first-time buyer looking with easy transport links to central London. The amenities of West Norwood and Streatham/Streatham Hill station are close-by as are the restaurants and shops of Brixton. The open spaces of the Green Flag awarded Brockwell Park and Dulwich Park are a walk away, along with its iconic 1930's Lido and sports facilities.



Telephone 020 3697 9399  
Website [www.oaksestateagents.com](http://www.oaksestateagents.com)  
Email [Tulsehill@oaksestateagents.Com](mailto:Tulsehill@oaksestateagents.Com)

## TRAEMORE COURT

APPROXIMATE GROSS INTERNAL FLOOR AREA: 615 SQ FT - 57.15 SQ M



### GROUND FLOOR

FOR ILLUSTRATION PURPOSES ONLY

THIS FLOOR PLAN SHOULD BE USED AS A GENERAL OUTLINE FOR GUIDANCE ONLY AND DOES NOT CONSTITUTE IN WHOLE OR IN PART AN OFFER OR CONTRACT. ANY INTENDING PURCHASER OR LESSEE SHOULD SATISFY THEMSELVES BY INSPECTION, SEARCHES, ENQUIRIES AND FULL SURVEY AS TO THE CORRECTNESS OF EACH STATEMENT. ANY AREAS, MEASUREMENTS OR DISTANCES QUOTED ARE APPROXIMATE AND SHOULD NOT BE USED TO VALUE A PROPERTY OR BE THE BASIS OF ANY SALE OR LET.