



## Claverdale Road, SW2 2DH

£750,000

- Three bedroom house
- Quiet location
- Potential to extend
- Period features throughout
- Close to transport
- Large garden

# Claverdale Road, SW2 2DH

A beautiful three-bedroom, period home set on the quiet and sought after Claverdale Road. Lovingly cared for by the current owners this freehold property is rich with period features and benefits from an impressive amount of living space. This wonderful home is in excellent decorative order and comprises; three bedrooms with plenty of storage, living room, a well maintained family bathroom a kitchen with integrated units and a dining room which opens onto a beautiful garden. This home would be perfect for a first time buyer or home mover looking for more space, the property could be extended into the loft and to the rear (STPP). The amenities and restaurants local to Tulse Hill are close-by, as is the night life, cinema and tube links in Brixton. The leafy, wide, open spaces of the Green Flag awarded Brockwell Park are a short walk away, along with its iconic 1930's Lido and sports facilities.



Telephone

020 3697 9399

Website

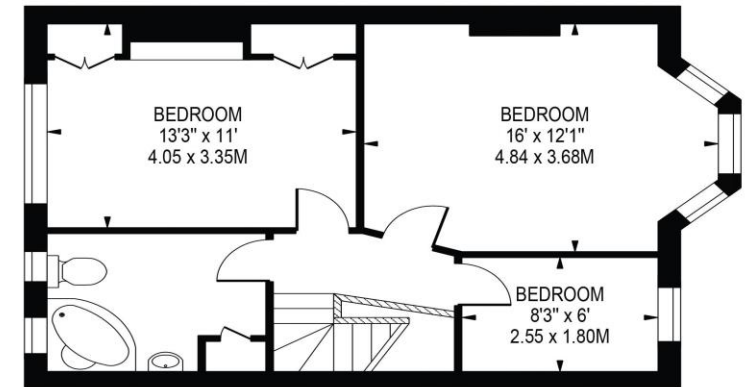
[oaksestateagents.com](http://oaksestateagents.com)

Email

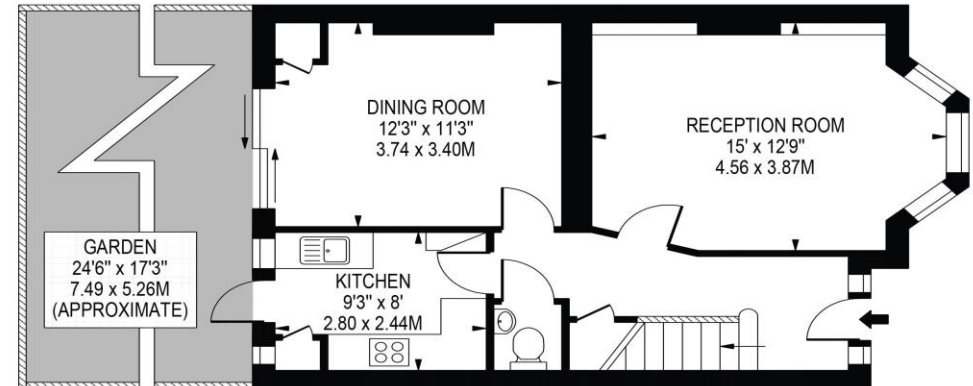
[Tulsehills@oaksestateagents.com](mailto:Tulsehills@oaksestateagents.com)

## CLAVERDALE ROAD

APPROXIMATE GROSS INTERNAL FLOOR AREA: 1033 SQ FT - 96.00 SQ M



FIRST FLOOR



GROUND FLOOR

FOR ILLUSTRATION PURPOSES ONLY

THIS FLOOR PLAN SHOULD BE USED AS A GENERAL OUTLINE FOR GUIDANCE ONLY AND DOES NOT CONSTITUTE IN WHOLE OR IN PART AN OFFER OR CONTRACT. ANY INTENDING PURCHASER OR LESSEE SHOULD SATISFY THEMSELVES BY INSPECTION, SEARCHES, ENQUIRIES AND FULL SURVEY AS TO THE CORRECTNESS OF EACH STATEMENT. ANY AREAS, MEASUREMENTS OR DISTANCES QUOTED ARE APPROXIMATE AND SHOULD NOT BE USED TO VALUE A PROPERTY OR BE THE BASIS OF ANY SALE OR LET.