



Fisher Close, CR0 6QY

£275,000

- No chain
- 592 sq. ft. of living space
- Private garage

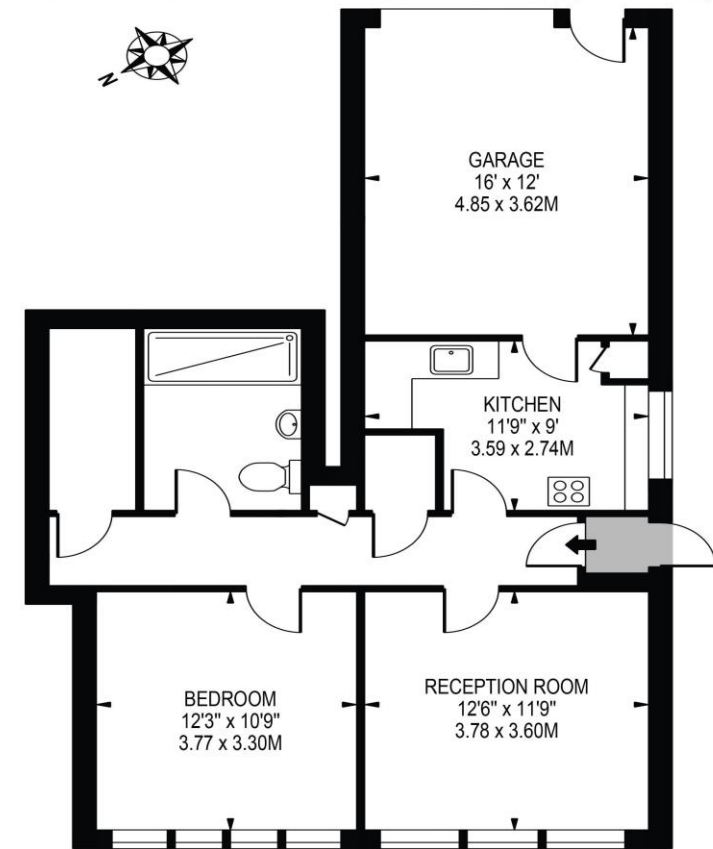
- Own private entrance
- Excellent transport links into The City
- Close to wide array of popular local amenities

Fisher Close, CR0 6QY

Oaks are delighted to present to the market this one-bedroom flat situated in the heart of Addiscombe. Offered to the market with no onward chain, Fisher Close is the perfect property for anybody who looking to add their own stamp and value. Light and airy throughout, the property benefits from 592 sq. ft. of living space and briefly comprises; one double bedroom, spacious reception room, kitchen, and contemporary bathroom and further benefits from a private garage. This lovely home would suit any commuter requiring access into The City due its close proximity to East Croydon station and a number of local tram stops. East Croydon station will provide you with direct access into London Victoria, London Bridge and Clapham Junction in one direction and Gatwick Airport and Brighton in the other.



FISHER CLOSE
APPROXIMATE TOTAL INTERNAL FLOOR AREA: 781 SQ FT - 72.57 SQ M
(INCLUDING GARAGE)
APPROXIMATE GROSS INTERNAL AREA OF GARAGE: 189 SQ FT - 17.56 SQ M



GROUND FLOOR
FOR ILLUSTRATION PURPOSES ONLY

THIS FLOOR PLAN SHOULD BE USED AS A GENERAL OUTLINE FOR GUIDANCE ONLY AND DOES NOT CONSTITUTE IN WHOLE OR IN PART AN OFFER OR CONTRACT. ANY INTENDING PURCHASER OR LESSEE SHOULD SATISFY THEMSELVES BY INSPECTION, SEARCHES, ENQUIRIES AND FULL SURVEY AS TO THE CORRECTNESS OF EACH STATEMENT. ANY AREAS, MEASUREMENTS OR DISTANCES QUOTED ARE APPROXIMATE AND SHOULD NOT BE USED TO VALUE A PROPERTY OR BE THE BASIS OF ANY SALE OR LET.

Telephone 0203 973 9700
Website www.oaksestateagents.com
Email croydon@oaksestateagents.com

