



## Abbots Park, SW2 3QX

- One bedroom
- Maisonette
- Separate kitchen
- Ground floor
- Front and back gardens
- Close to transport

Offers in Excess of



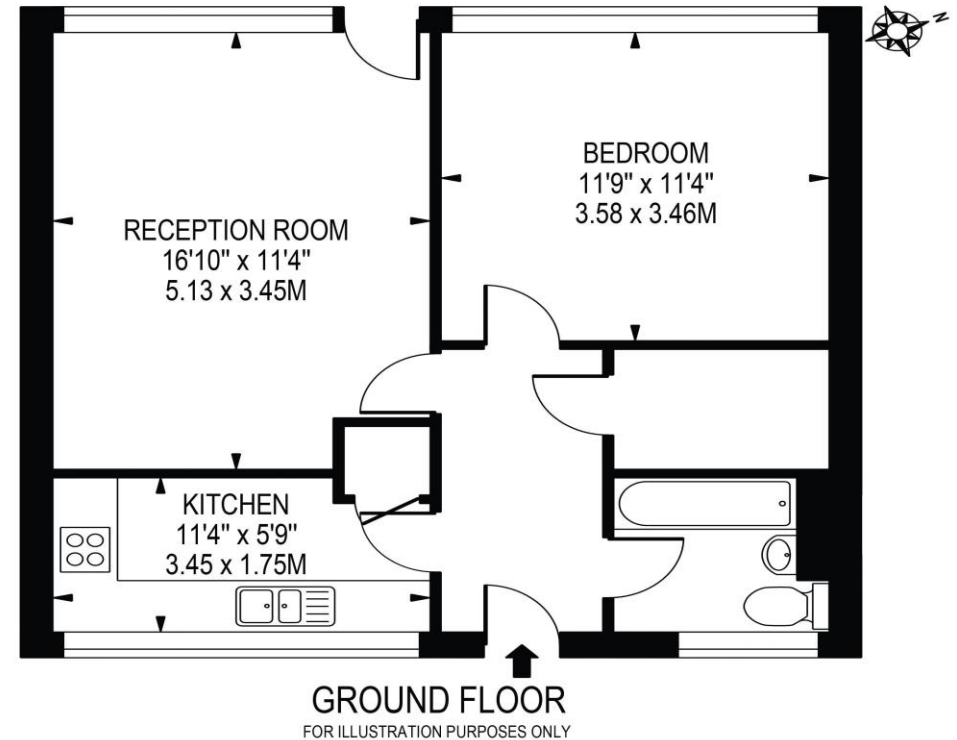
# Abbots Park, SW2 3QX

A stunning maisonette with a private garden a short walk away from Tulse Hill Station. This purpose built flat has been completely refurbished by the current owner and comprises; a large double bedroom that is flooded with natural light from a large windows, a large living room, semi open kitchen complete with integrated units, modern bathroom, front garden and private rear garden. It would be perfect for a first time buyer looking for a property that has a large outside space or investor. The Estate includes unrestricted parking spaces. The amenities local to Tulse Hill are close-by as are the restaurants and shops of Brixton and Streatham Hill. The open spaces of the Green Flag award Brockwell Park are a short walk away, along with its iconic 1930's Lido and sports facilities.



## ABBOTS PARK

APPROXIMATE GROSS INTERNAL FLOOR AREA: 536 SQ FT - 49.76 SQ M



THIS FLOOR PLAN SHOULD BE USED AS A GENERAL OUTLINE FOR GUIDANCE ONLY AND DOES NOT CONSTITUTE IN WHOLE OR IN PART AN OFFER OR CONTRACT. ANY INTENDING PURCHASER OR LESSEE SHOULD SATISFY THEMSELVES BY INSPECTION, SEARCHES, ENQUIRIES AND FULL SURVEY AS TO THE CORRECTNESS OF EACH STATEMENT. ANY AREAS, MEASUREMENTS OR DISTANCES QUOTED ARE APPROXIMATE AND SHOULD NOT BE USED TO VALUE A PROPERTY OR BE THE BASIS OF ANY SALE OR LET.

Telephone 020 3697 9399  
Website oaksestateagents.com  
Email Tulsehill@oaksestateagents.Com